

Regional Syndromic Surveillance Bi-Weekly Report

Wednesday January 20, 2010 - Tuesday February 2, 2010

Health Unit Coverage = KFL&A, HPECHU, LGL, PCCHU

EDSS

Emergency Department Syndromic Surveillance

Emergency Department (ED) Activity

Summary: Overall ED visit volumes still remain relatively stable. Admissions for respiratory and gastrointestinal related complaints are also stable. Gastrointestinal-related ED visits, which are consistent with seasonal norovirus circulation, have continued to rise but not at an exponential rate. Very few alerts have been produced over the last two weeks but the sustained upward trend continues to be monitored.

KFL&A Respiratory: Two respiratory outbreaks of unknown origin were declared in local long-term care facilities on Jan. 26th (subsequently declared over on Jan. 29th) and Feb. 1st.

KFL&A Gastrointestinal: Between the dates of Jan. 20 and Feb 2 there were 5 GI outbreaks declared over in long-term care and hospital facilities. As of Feb. 2 there are 6 ongoing GI outbreaks with 3 of them confirmed as norovirus outbreaks.

Websites of Interest:

Ontario:

[Important Health Notices](#)
[Flu Bulletins](#)

Canada:

[Fight Flu](#)
[FluWatch](#)
[Travel Health Notices](#)

International:

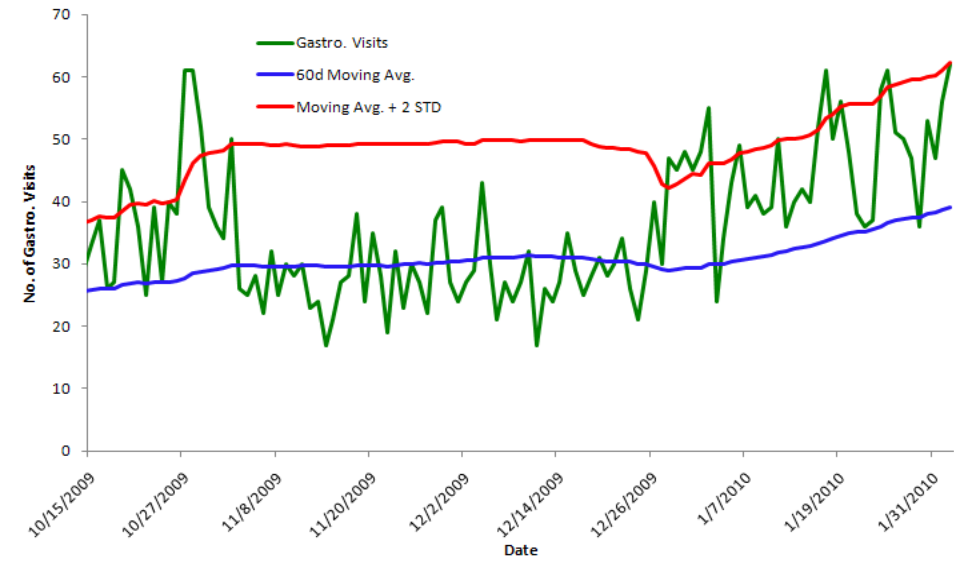
[WHO](#)
[CDC](#)

Local:

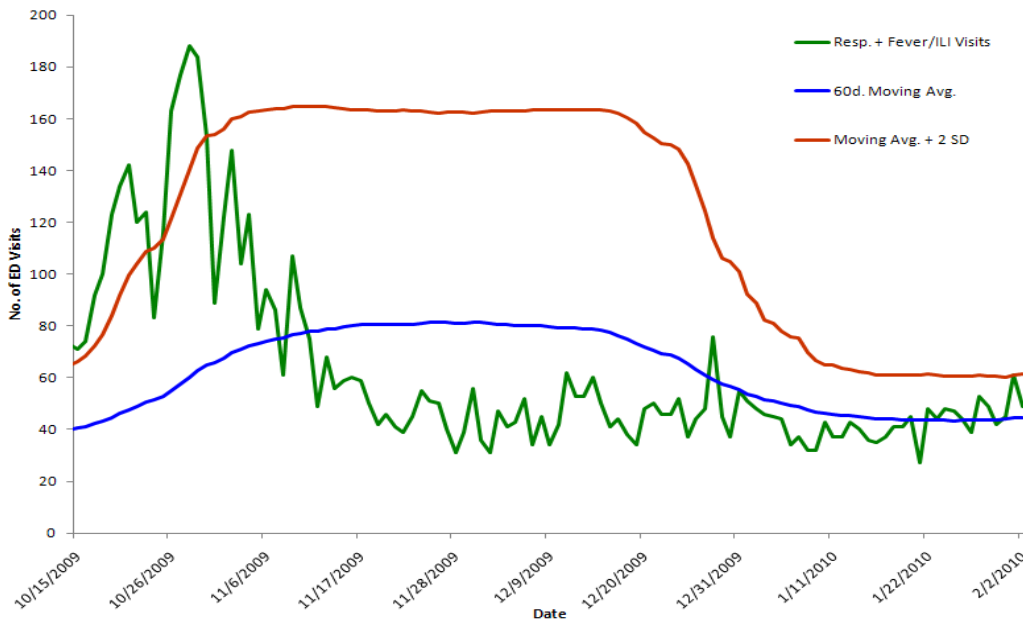
[KFL&A Public Health](#)

For a visual representation of respiratory and gastrointestinal activity in your community please visit [Infection Watch Live](#)

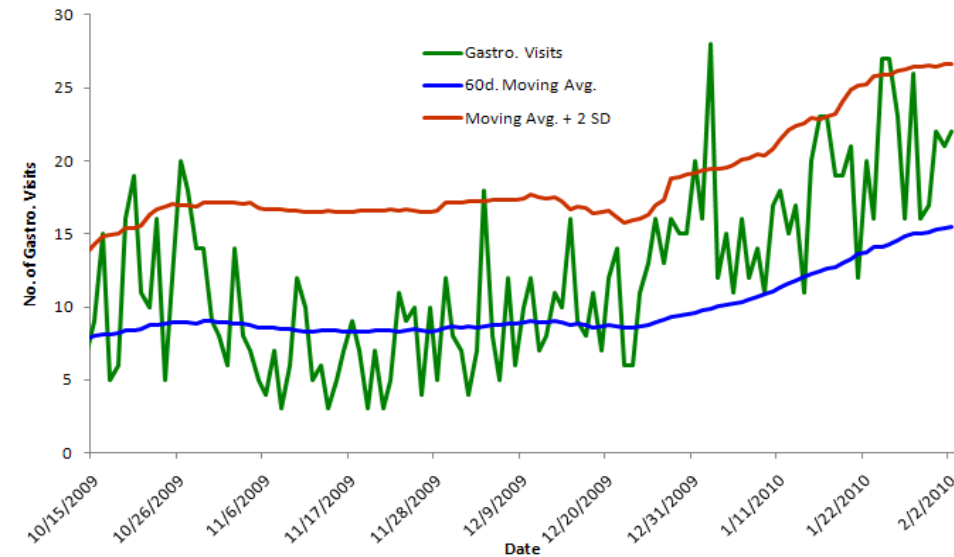
Gastrointestinal ED Visits to All Regional Hospitals



Respiratory and Fever/ILI ED Visits to KFL&A Hospitals



Gastrointestinal ED Visits to KFL&A Hospitals



NOTE: Further details can be obtained by contacting EDSS staff at avandijk@kflapublichealth.ca or 613-549-1232 x1510 All feedback is welcome and appreciated.

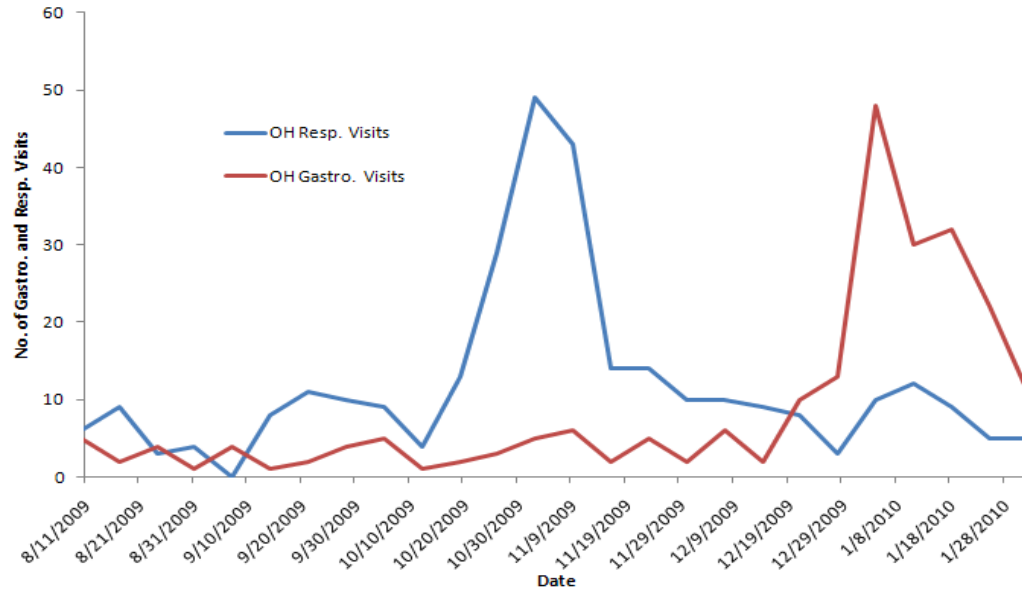
Regional Syndromic Surveillance Report

Wednesday January 20, 2010 - Tuesday February 2, 2010

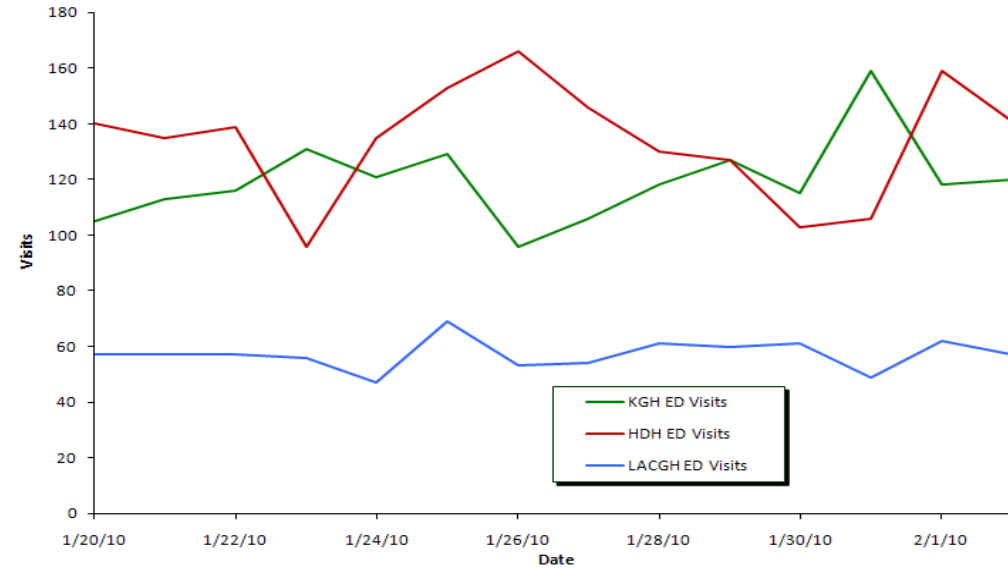
EDSS

Emergency Department Syndromic Surveillance

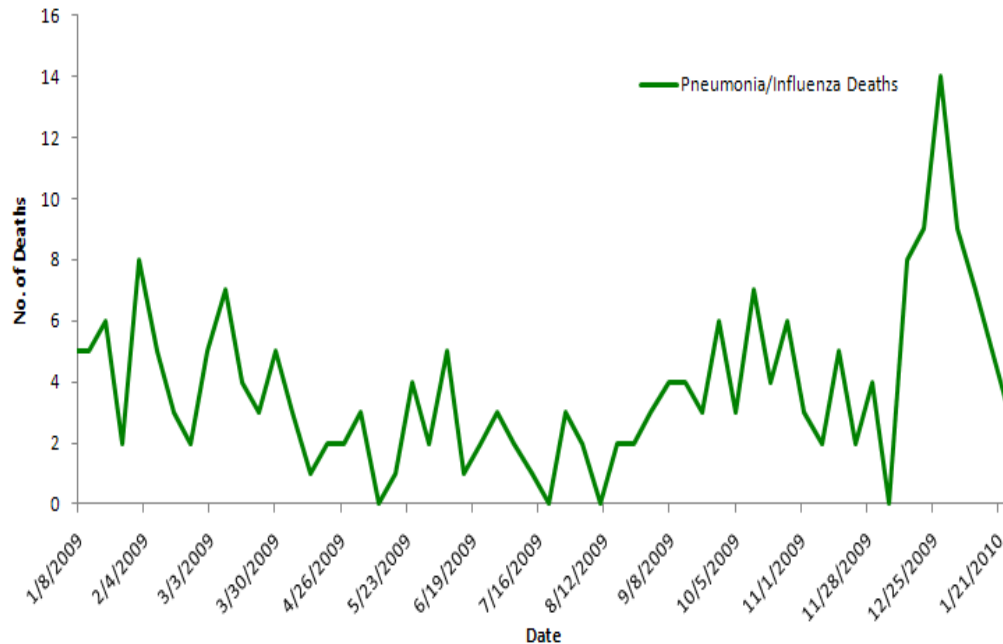
Weekly Gastro. & Resp. Visits by Staff at KGH to Occupational Health & Safety



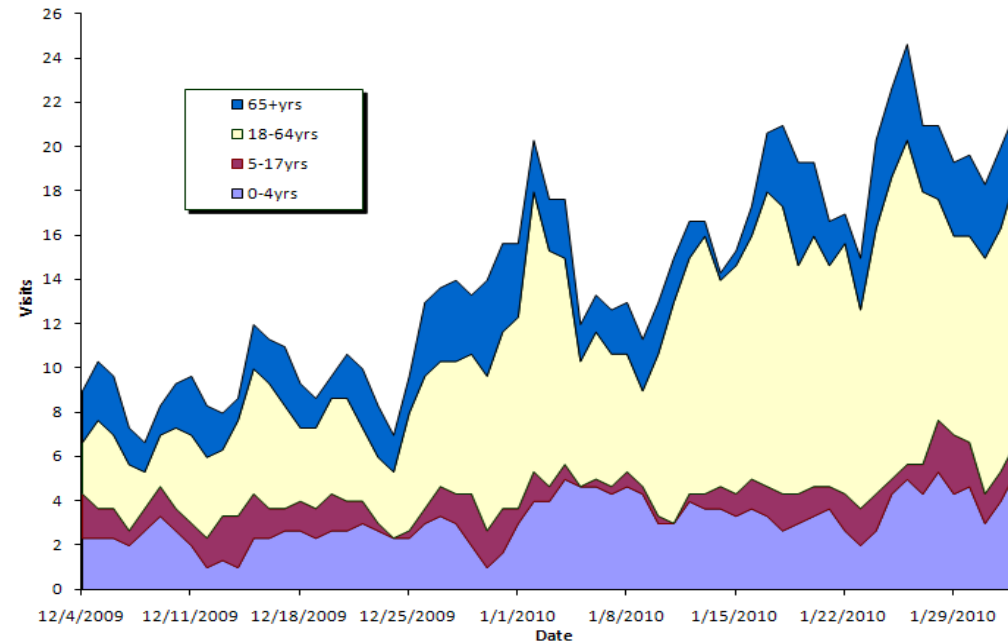
Daily ED Visit Volume at KFL&A Hospitals



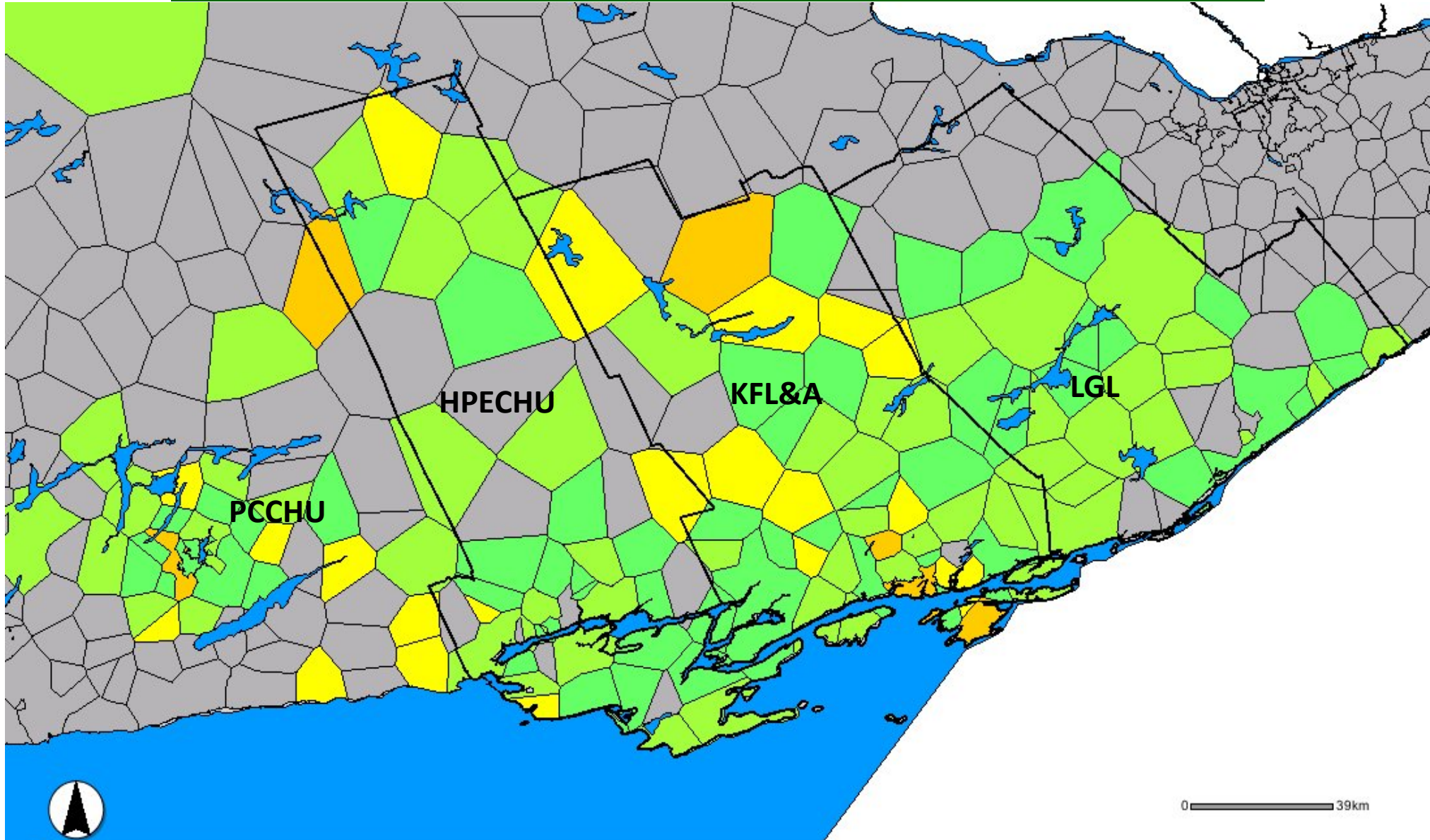
Weekly Pneumonia/Influenza-related Deaths in KFL&A (2 week lag)



Gastrointestinal ED Visits to KFL&A Hospitals by Age Group



Visual Representation of Respiratory ED Visit Activity over the past 14 days

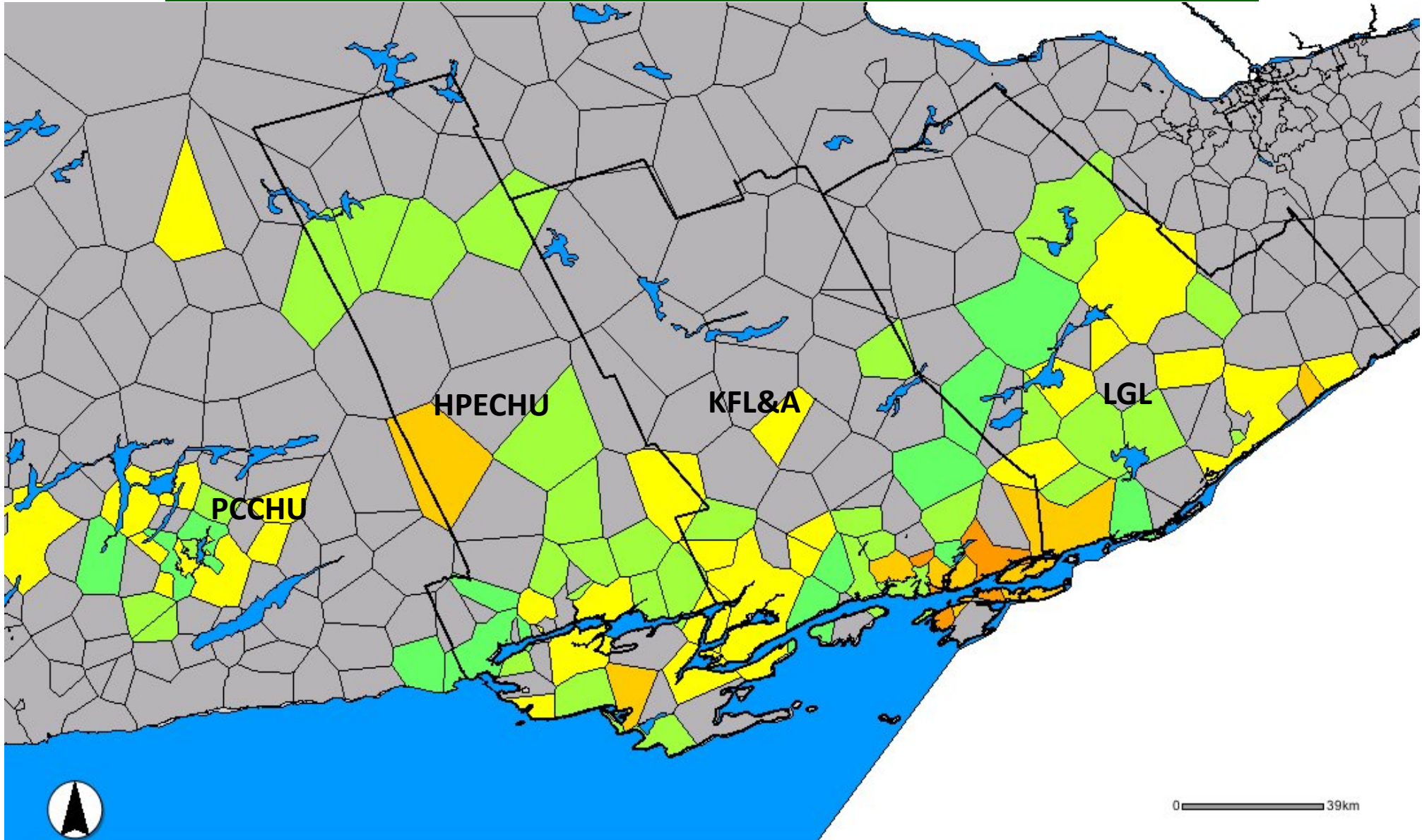


LEGEND

Number of standard deviations away from the average respiratory case count per postal region



Visual Representation of Gastrointestinal ED Visit Activity over the past 14 days



LEGEND

Number of standard deviations away from the average gastrointestinal case count per postal region

