

Regional Syndromic Surveillance Influenza Report

Wednesday November 18, 2009 - Tuesday November 24, 2009

Health Unit Coverage = KFL&A, HPECHU, LGL, PCCHU

EDSS

Emergency Department Syndromic Surveillance

Emergency Department (ED) Activity

Summary: ED visit volumes continue to drop since our peak at the end of October. Regionally, our hospitals are triaging an average of 15% of their visits for a respiratory complaint. Admissions for respiratory related complaints are also dropping.

School absenteeism rates dropped again this week with about 12% of Kingston schools seeing rates of absence over 10% (down from 20% last week).

Update: The past week has produced 11 new cases of Influenza A pH1N1, 1 case of rhinovirus, 2 cases of Enterovirus, 3 Parainfluenza I and 7 Influenza A (subtype pending) from the Public Health Laboratory—Kingston.

KFL&A has a total of 144 pH1N1 cases, 57 are 0-17 y/o, 81 are 18-64 y/o and 6 are 65+ y/o.

For a visual representation of respiratory activity in your community please visit [Infection Watch Live](#)

Websites of Interest:

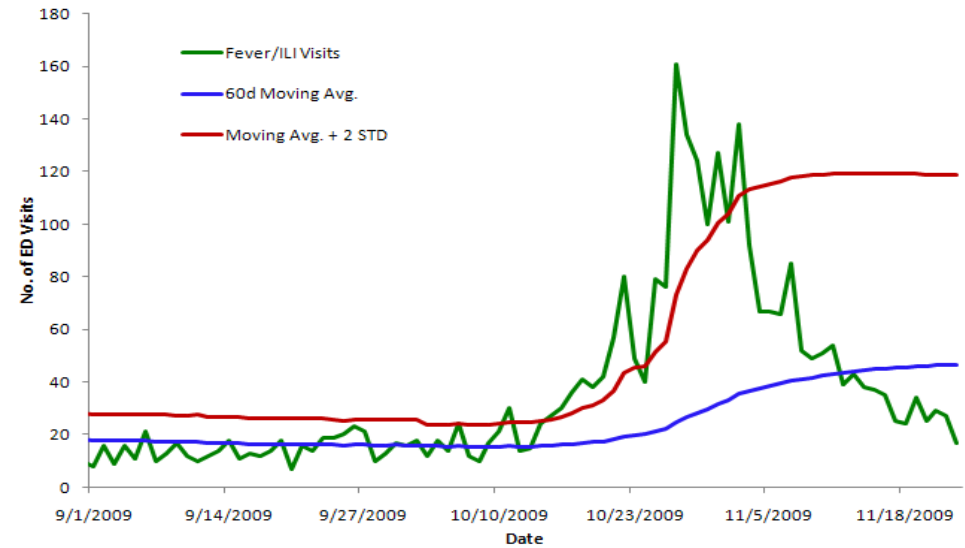
Ontario:
[Important Health Notices](#)
[Flu Bulletins](#)

Canada:
[Fight Flu](#)
[FluWatch](#)
[Travel Health Notices](#)

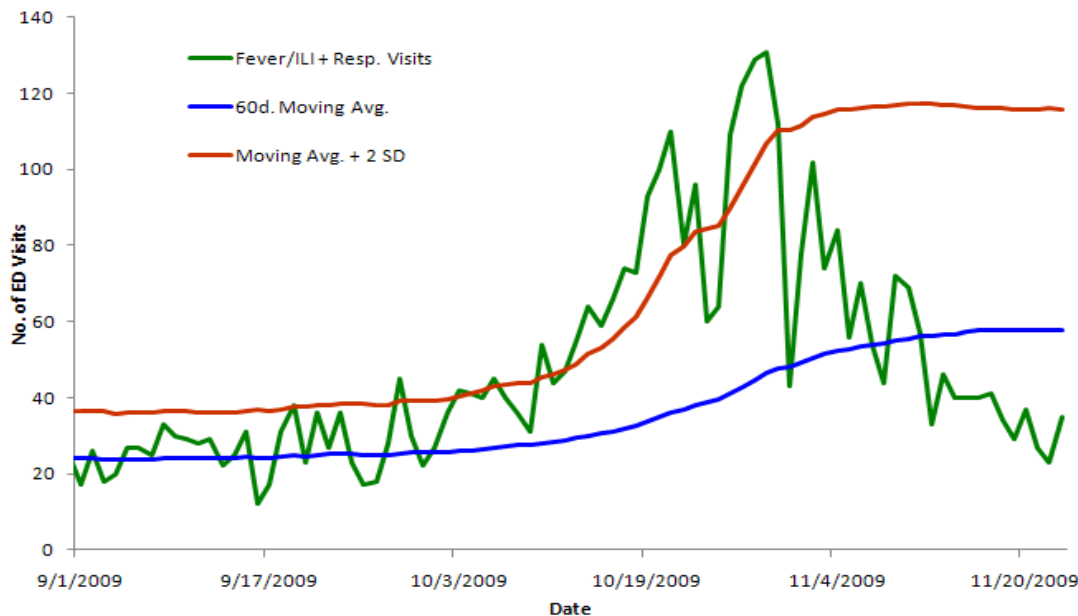
International:
[WHO](#)
[CDC](#)

Local:
[KFL&A Public Health](#)

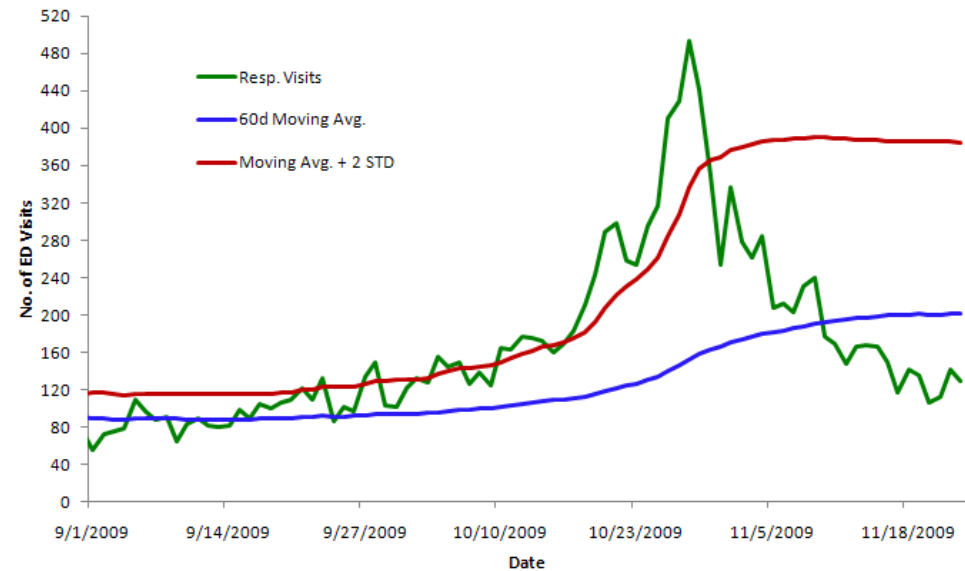
Fever/ILI ED Visits to All Regional Hospitals



Respiratory and Fever/ILI ED Visits to KFL&A Hospitals



Respiratory ED Visits to All Regional Hospitals



NOTE: Further details can be obtained by contacting EDSS staff at avandijk@kflapublichealth.ca or 613-549-1232 x1510 All feedback is welcome and appreciated.

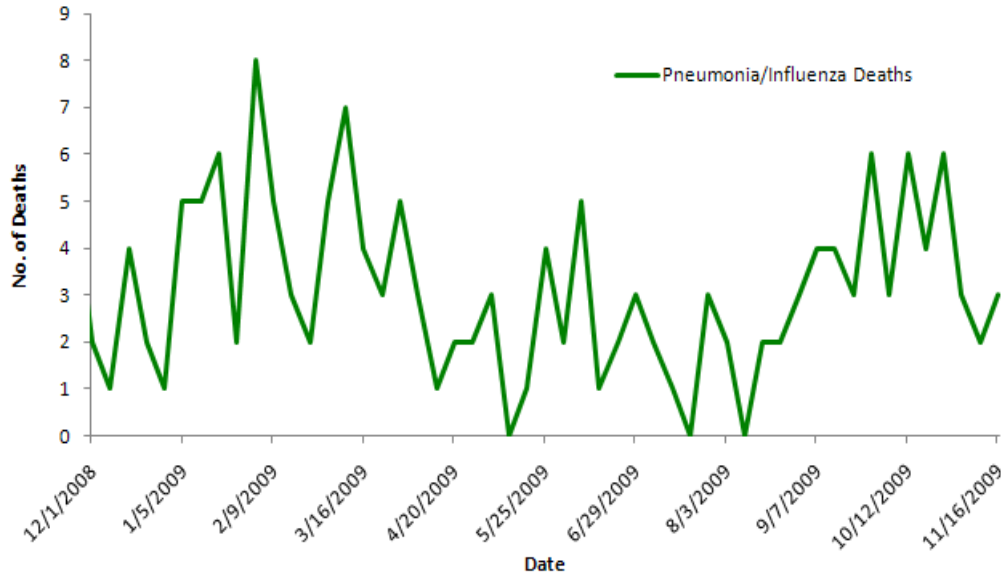
Regional Syndromic Surveillance Influenza Report

Wednesday November 18, 2009 - Tuesday November 24, 2009

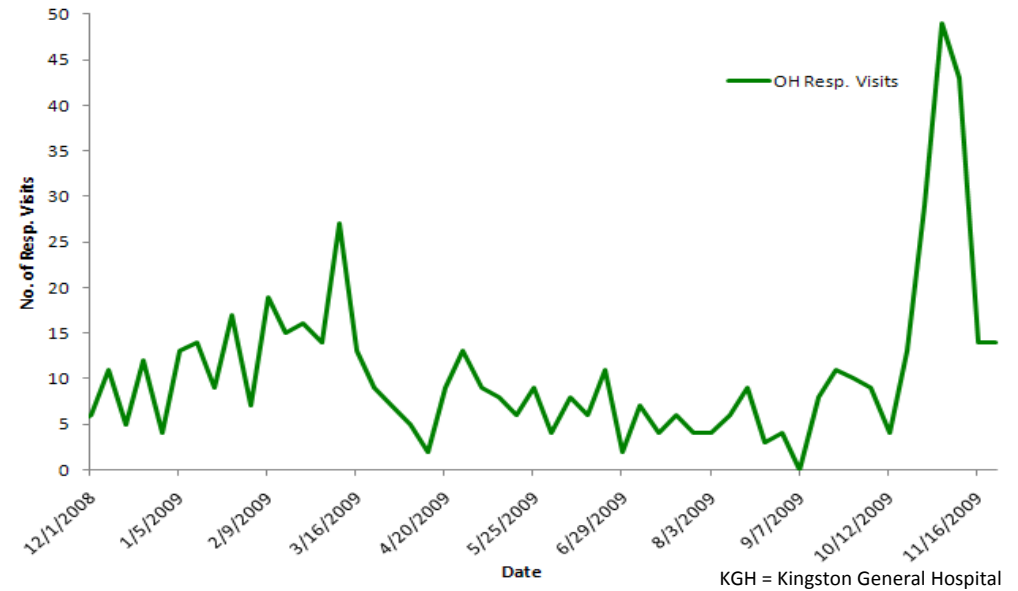
EDSS

Emergency Department Syndromic Surveillance

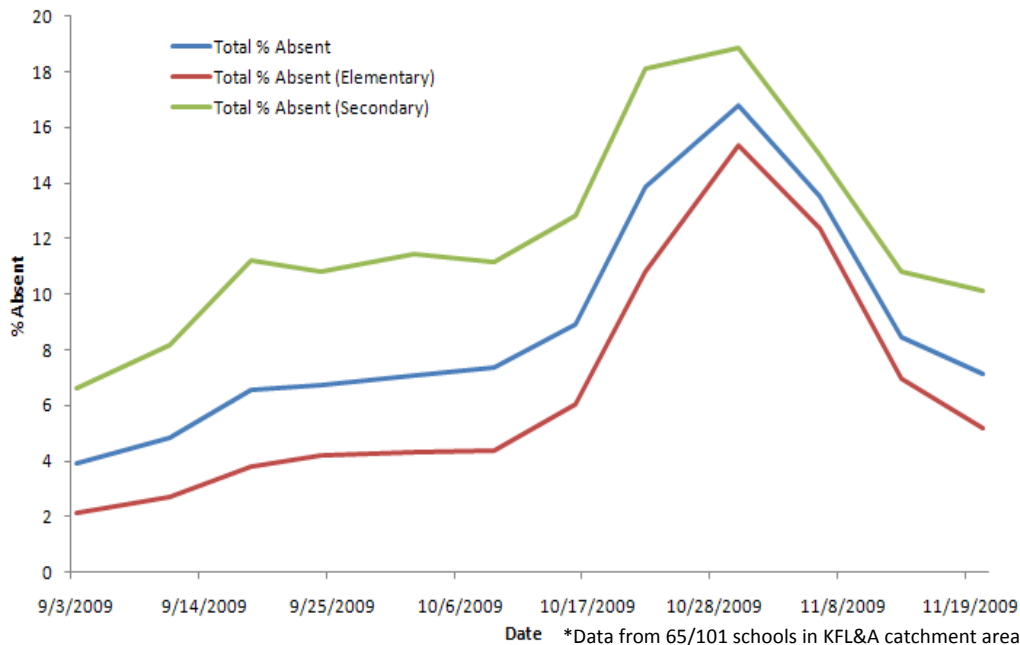
Weekly Pneumonia/Influenza-related Deaths in KFL&A (2 week lag)



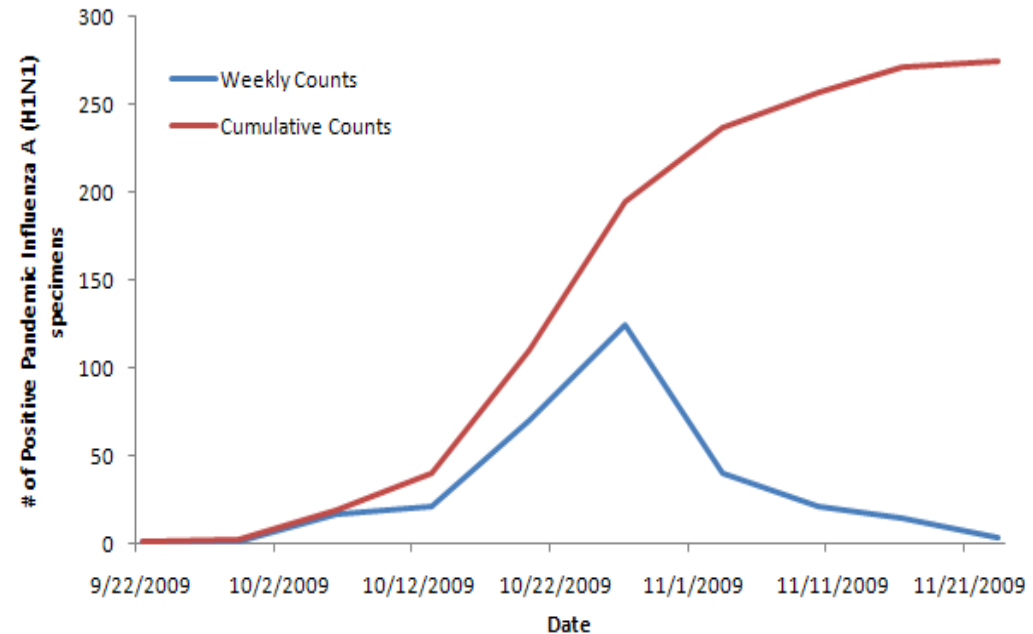
Weekly Respiratory Visits by Staff at KGH to Occupational Health & Safety



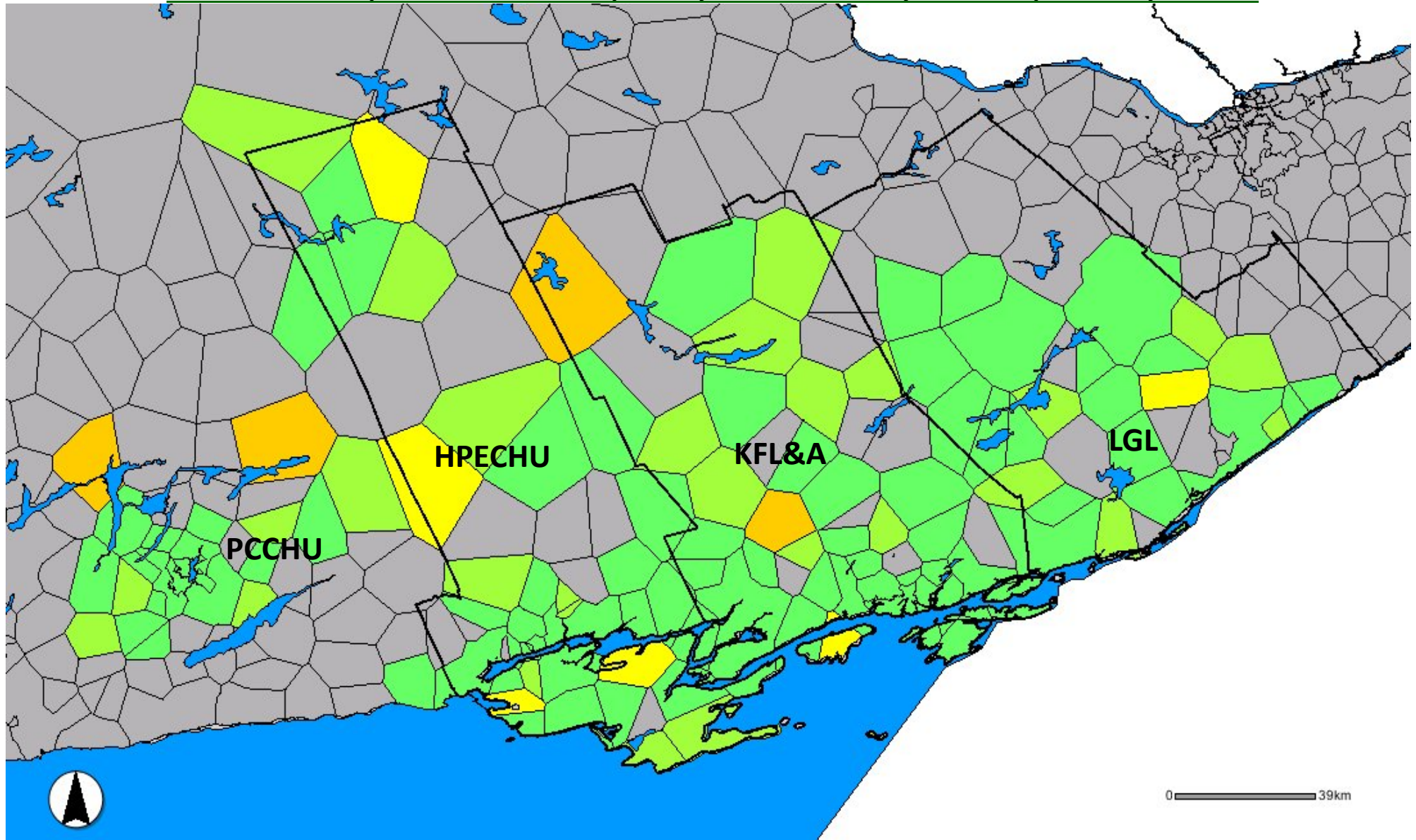
Weekly All Cause School Absenteeism Rates in KFL&A



Weekly pH1N1 counts from the Public Health Lab—Kingston



Visual Representation of Respiratory ED Visit Activity over the past 7 days

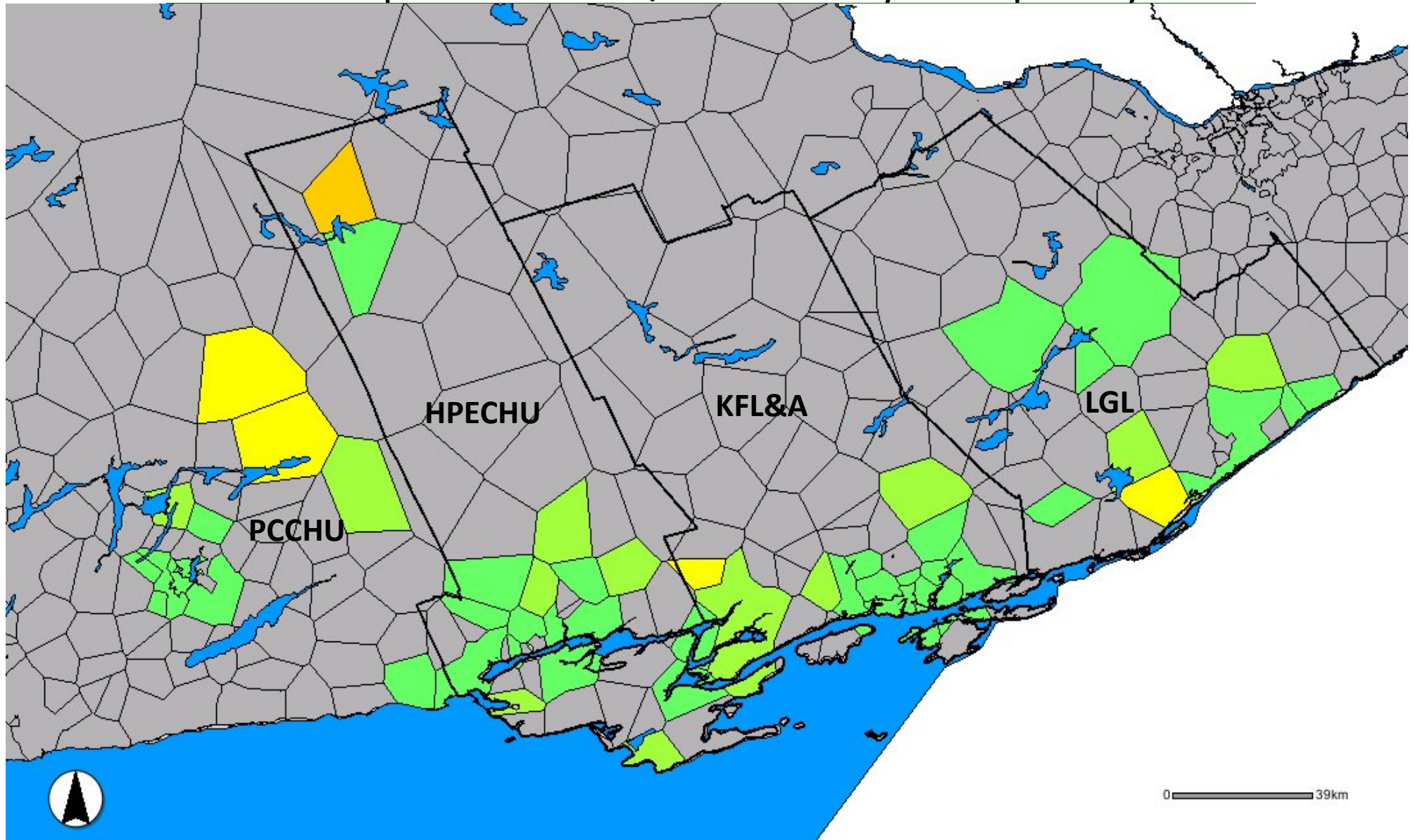


LEGEND

Number of standard deviations away from the average respiratory case count per postal region



Visual Representation of Fever/ILI ED Visit Activity over the past 7 days



LEGEND

Number of standard deviations away from the average Fever/ILI case count per postal region

